



DSM USA

DES MOINES, IOWA

# AG INNOVATION

## IOWA LEADS THE WAY

**#1 PRODUCER OF EGGS**  
— USDA, 2024

**#1 PRODUCER OF CORN**  
— USDA, 2024

**#1 PRODUCER OF FUEL ETHANOL AND BIODIESEL**  
— EIA, 2024

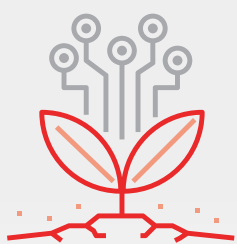
**#1 PRODUCER OF RED MEAT (INCLUDING PORK)**  
— USDA, 2024

**#2 PRODUCER OF SOYBEANS**  
— USDA, 2024

**#3 MOST SOIL AND PLANT SCIENTISTS OF ANY STATE**  
— Bureau of Labor Statistics, 2023

**FIRST STATE TO PASS A RENEWABLE CHEMICALS TAX CREDIT**  
— TEconomy Partners, LLC

## R&D OPPORTUNITIES



Iowa State University's College of Agriculture and Life Sciences is one of the world's leading institutions of agriculture, with more than 160 years of leadership in science, education and extension. Comprised of eight different colleges, including the College of Agriculture and Life Sciences, Iowa State is among the most influential land grant institutions in the nation.

### Internationally Recognized

Iowa State University's agricultural programs rank in the

**TOP 4%**

worldwide for 11 consecutive years among other agriculture and forestry institutions.

— QS World University Rankings, 2024



### BioCentury Research Farm (BCRF)

The Iowa State University BCRF is the first-in-the-nation integrated research and demonstration facility dedicated to biomass production and processing.



### Center for Crop Utilization Research (CCUR)

CCUR provides cost-effective research solutions for clients to test new products and processes without interrupting their own full-scale production systems, enabling companies to start new businesses or expand existing ones.

## PRO-BUSINESS

# NO<sup>00</sup> TAXES

No sales, use or property tax on machinery and equipment. No sales tax on electricity or natural gas used in the manufacturing process. No corporate income tax on profits from outside Iowa.



- Iowa offers a partially refundable 6.5% tax credit for R&D activities.
- State financial assistance.
- Local property tax abatement.

## GLOBAL LEADERSHIP

Iowa is home to  
**29 OF THE LARGEST 100**  
food manufacturers and processors.  
— *Food Processing*, 2024



The foremost international award recognizing individuals who have increased the quality, quantity or availability of food in the world.

## GLOBAL AG INNOVATION AND MANUFACTURING COMPANIES IN DSM

- |                         |                          |
|-------------------------|--------------------------|
| • ADM                   | • John Deere             |
| • Bayer                 | • Kemin Industries, Inc. |
| • Bridgestone           | • Lely North America     |
| • Cargill               | • Stine Seed             |
| • Corteva Agriscience   | • Vermeer Corporation    |
| • Hy-Line International |                          |

# \$344 MILLION

recent project investments in DSM



Ag Express Electronics  
Algae Biomass Organization  
B&G Foods  
Big Grove Brewery & Taproom  
Bud & Mary's  
Camlin Fine Sciences  
FarmlandFinder  
Gross-Wen Technologies  
Helena Industries, Inc.  
Ihle Fabrications, LLC  
i2-tech  
Kemin Industries  
Landus  
Lely North America  
Lola's Fine Hot Sauce  
MetaFuel  
Michael Foods  
Mrs. Clark's Foods  
Osmundson Manufacturing  
PowerPollen  
Premier Tech  
Spraytec  
Ten Corp Inc./Cattlemen's Heritage  
Vermeer Corporation

### SID JUWARKER

Vice President of Economic Development p: (515) 286-4964 e: [sjuwarker@DSMpartnership.com](mailto:sjuwarker@DSMpartnership.com)

[growDSMUSA.com](http://growDSMUSA.com) | [dataDSMUSA.com](http://dataDSMUSA.com)



GREATER DES MOINES  
PARTNERSHIP